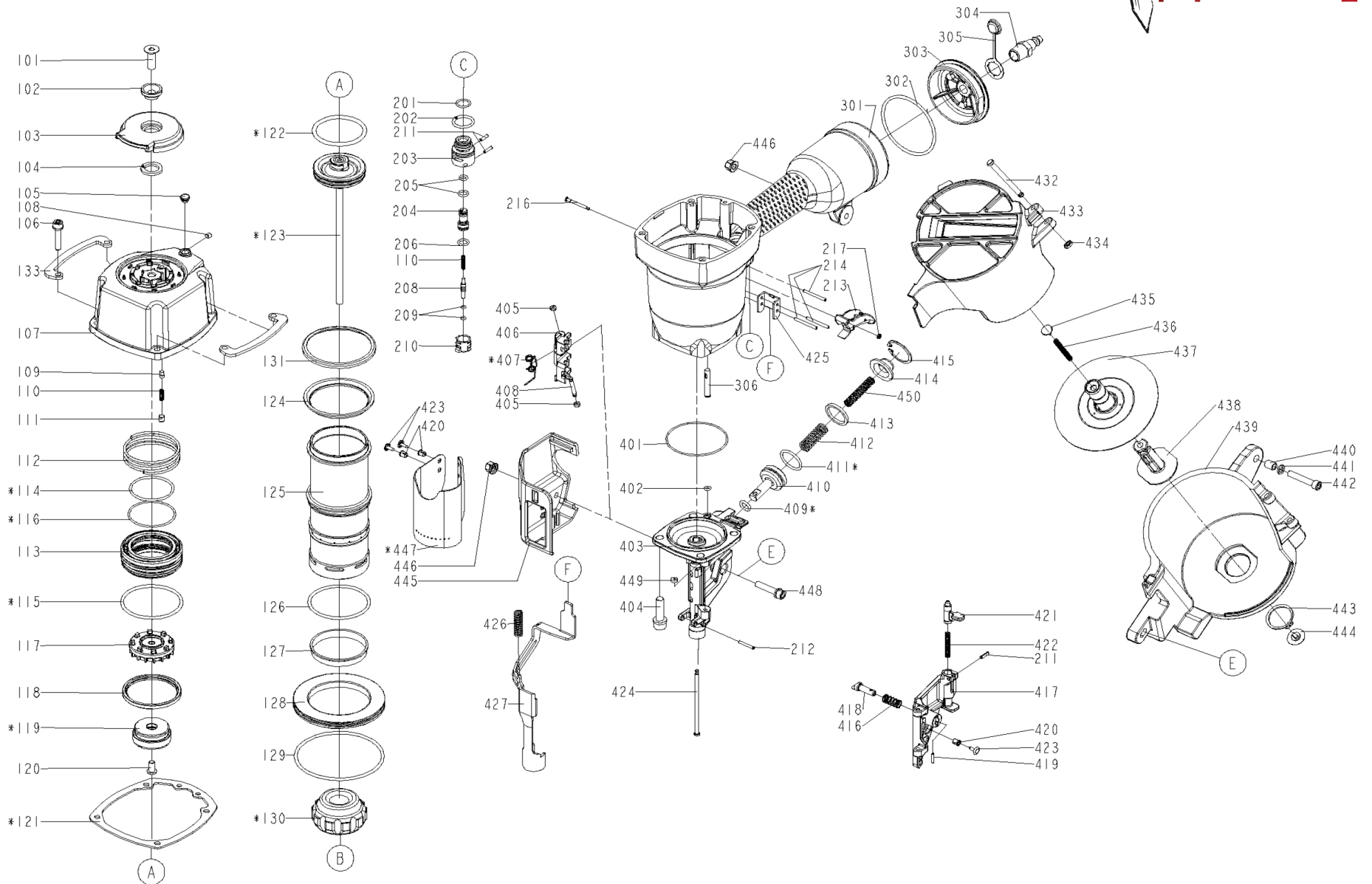


"The Advantage in Fasteners"

**INTERNAIL**  
fasteners

# CN90

**B**ROCHEUSES  
MONTRÉAL **I**NC



Item	Part	Qty	DESCRIPTION	Item	Part	Qty	DESCRIPTION
101	820695		COUNTER SUNK SCREW	127	810532		CYLINDER RING
102	820170		DEFLECTOR PAD	128	830804		CYLINDER SPACER
103	820316		DEFLECTOR	129	830253		O - RING
104	820040		RUBBER PAD	130	810605		BUMPER
105	820064		GROMMET	131	820200		PRESS RING
106	820622		BOLT ASSY	133	820548		GUIDE COVER
107	820159		CAP	201	920519		O - RING
108	920502		HEX.SOC.HD.SCREW	202	920521		O - RING
109	820173		POSITIONING AXIS	203	920520		PLUNGER CAP
110	920525		SPRING	204	920523		VALVE PLUNGER
111	920880		HEX.SOC.HD.SCREW	205	920522		O - RING
112	810866		COMPRESSION SPRING	206	920524		O - RING
113	820144		HD.VALVE PISTON	208	920823		PLUNGER
114	830387		O - RING	209	920526		O - RING
115	830361		O - RING	210	920528		TRIGGER VALVE HEAD
116	830388		O - RING	211	920529		SPRING PIN
117	820215		VALVE	212	820858		SPRING PIN
118	820558		COLLAR	213	810100		TRIGGER UNIT
119	820307		SEAL	214	920530		SPRING PIN
120	820687		HALF ROUND HD.HEX.BOLT	216	810415		TRIGGER PIVOT PIN
121	810311		CYLINDER CAP SEAL	217	920627		URETHANE RETAINER
122	830802		O-RING	301	810207		GUN BODY UNIT
123	830803		DRIVER UNIT	302	830334		O - RING
124	820055		PRESS RING	303	810929		END CAP
125	810504		CYLINDER	304	920320		AIR PLUG
126	830247		O - RING	305	940620		AIR PLUG CAP

Item	Qty	Part	DESCRIPTION	Item	Qty	Part	DESCRIPTION
306		820220	FILTER	425		810824	SAFETY GUIDE
401		830323	O - RING	426		810816	SAFETY SPRING
402		920544	O - RING	427		810703	SAFETY
403		820424	NOSE PIECE	428		830812	HEX.SOX.HD.BOLT
404		820623	BOLT ASSY	429		820811	FLAT WASHER
405		920553	PU RETAINER	430		830813	SCREW FIXING SEAT
406		830806	FEED FINGER	432		810650	PIN
407		810334	FEED FINGER SPRING	433		820008	MAGAZINE COVER
408		820131	PIN FEED PISTON	434		810437	FIXED RING
409		830223	O - RING	435		810948	SPRING BASE
410		820125	FEED PISTON	436		810802	PULL SPRING
411		830303	O - RING	437		830815	SPACER
412		810850	FEED PISTON SPRING	438		820019	ADJUST POST
413		810959	FEED BUMPER	439		820002	MAGAZINE CASE
414		820136	FEED PISTON CAP	440		820552	LATCH SPRING BUSHING
415		820820	C - RING	441		820804	FLAT WASHER
416		830807	STOPPER FINGER SPRING	442		820675	HEX.SOC.HD.BOLT
417		830808	DOOR	443		841182	S - RING
418		830809	NAIL STOP	444		810945	SPRING BASE
419		830810	SPIRAL PINS	445		810942	SAFETY COVER
420		920586	FIXED RING	446		830015	BOLT CAP
421		810351	DOOR LATCH	447		820430	MUZZLE PROTECTOR
422		810360	LATCH SPRING	448		820620	BOLT ASSY
423		920587	FIXED PIN	449		820051	PU RETAINER
424		820108	DOOR SHAFT PIN	450		810819	SAFETY SPRING