

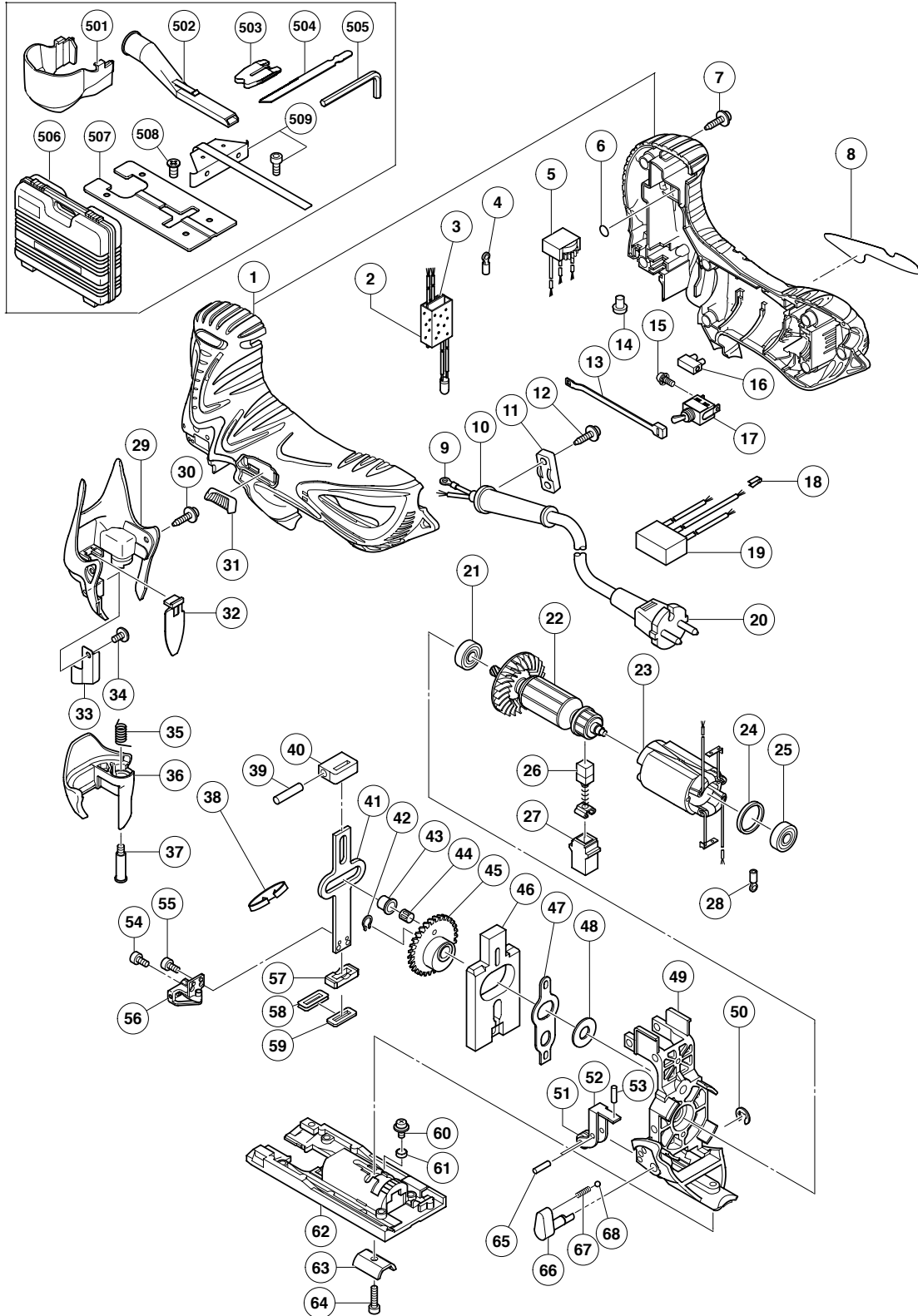
ELECTRIC TOOL PARTS LIST

JIG SAW

2005 · 12 · 29

Model CJ 110MVA

(E1)



PARTS

CJ 110MVA

ITEM NO.	CODE NO.	DESCRIPTION	NO. USED	REMARKS
1	325-419	HOUSING (A).(B) SET	1	
2	930-153	SUPPORT (B)	1	
* 3	325-415	PRINTED CIRCUIT BOARD (LED LIGHT)	1	
* 3	325-416	PRINTED CIRCUIT BOARD (LED LIGHT)	1	FOR USA, CAN
4	960-356	TERMINAL (A) M3.5 (10 PCS.)	1	
* 5	325-417	CONTROLLER 120V	1	
* 5	325-418	CONTROLLER 230V-240V	1	
6	984-528	O-RING (P-6)	4	
7	301-653	TAPPING SCREW (W/FLANGE) D4X20 (BLACK)	7	
8		NAME PLATE	1	
9	960-356	TERMINAL (A) M3.5 (10 PCS.)	1	
10	953-327	CORD ARMOR D8.8	1	
11	937-631	CORD CLIP	1	
12	984-750	TAPPING SCREW (W/FLANGE) D4X16	2	
13	321-594	SLIDE BAR	1	
14	959-140	CONNECTOR 50091 (10 PCS.)	1	
15	305-499	MACHINE SCREW (W/WASHER) M3.5X6	2	
16	938-307	PILLAR TERMINAL	1	
17	955-509	SWITCH (1P SCREW TYPE)	1	
* 18	302-488	EARTH TERMINAL	1	EXCEPT FOR USA, CAN
* 19	325-566	NOISE SUPPRESSOR	1	EXCEPT FOR USA, CAN
* 20	500-234Z	CORD	1	(CORD ARMOR D8.8)
* 20	500-247Z	CORD	1	(CORD ARMOR D8.8) FOR FIN, NOR, SWE, DEN
* 20	500-439Z	CORD	1	(CORD ARMOR D8.8) FOR NZL, AUS
* 20	500-240Z	CORD	1	(CORD ARMOR D8.8) FOR USA, CAN
* 20	500-447Z	CORD	1	(CORD ARMOR D8.8) FOR SUI
21	608-VVM	BALL BEARING 608VVC2PS2L	1	
* 22	360-764U	ARMATURE ASS'Y 120V	1	INCLUD. 21, 25
* 22	360-764E	ARMATURE 230V	1	
* 22	360-764F	ARMATURE 240V	1	
* 23	340-666D	STATOR 120V	1	
* 23	340-666E	STATOR 230V-240V	1	
24	323-420	RUBBER RING	1	
25	608-VVM	BALL BEARING 608VVC2PS2L	1	
26	999-041	CARBON BRUSH (1 PAIR)	2	
27	955-203	BRUSH HOLDER	2	
* 28	311-741	TERMINAL	1	
* 28	960-356	TERMINAL (A) M3.5 (10 PCS.)	1	FOR USA, CAN
29	325-078	FRONT COVER	1	
30	325-083	TAPPING SCREW (W/FLANGE) D4X12 (BLACK)	2	
31	325-414	SLIDE KNOB	1	
32	325-082	LIGHT BAR	1	
33	321-592	FENCE	1	
34	325-079	MACHINE SCREW (W/SP. WASHER) M4X8 (BLACK)	1	
35	321-580	LEVER SPRING	1	
36	325-080	LEVER	1	
37	325-081	LEVER BOLT	1	
38	325-071	PLATE SPRING	1	
39	983-564	PIN D6	1	
40	325-070	PLUNGER HOLDER (A)	1	
41	325-072	PLUNGER	1	

STANDARD ACCESSORIES

ITEM NO.	CODE NO.	DESCRIPTION	NO. USED	REMARKS
* 501	325-096	CHIP COVER	1	FOR EUROPE, NZL, AUS
* 502	321-591	DUST COLLECTOR	1	FOR EUROPE, NZL, AUS
* 503	321-590	TABLE INSERT	1	FOR EUROPE, NZL, AUS
	879-357	JIG SAW BLADE NO. 41 (5 PCS.)	1	
	944-458	HEX. BAR WRENCH 4MM	1	
	325-090	CASE	1	
* 507	321-993	SUB BASE (B) SET (PLASTIC)	1	INCLUD. 508 FOR FRA
* 508	321-996	SPECIAL BOLT	4	FOR FRA
* 509	321-593	GUIDE	1	FOR FRA

OPTIONAL ACCESSORIES

ITEM NO.	CODE NO.	DESCRIPTION	NO. USED	REMARKS
601	963-400	JIG SAW BLADES NO.97 FOR STAINLESS (5PCS.)	1	
602	879-336	JIG SAW BLADES NO. 11 (5 PCS.)	1	
603	879-337	JIG SAW BLADES NO. 12 (5 PCS.)	1	
604	879-338	JIG SAW BLADES NO. 15 (5 PCS.)	1	
605	879-339	JIG SAW BLADES NO. 16 (5 PCS.)	1	
606	879-340	JIG SAW BLADES NO. 21 (5 PCS.)	1	
607	879-341	JIG SAW BLADES NO. 22 (5 PCS.)	1	
608	321-878	JIG SAW BLADES (LONG) 185L (3PCS.)	1	
609	321-992	SUB BASE (A) SET (STEEL)	1	INCLUD. 610
610	321-996	SPECIAL BOLT	4	
611	321-593	GUIDE	1	
612	325-149	GREASE (MOLUB-ALLOY NO. 777-1) 75G	1	