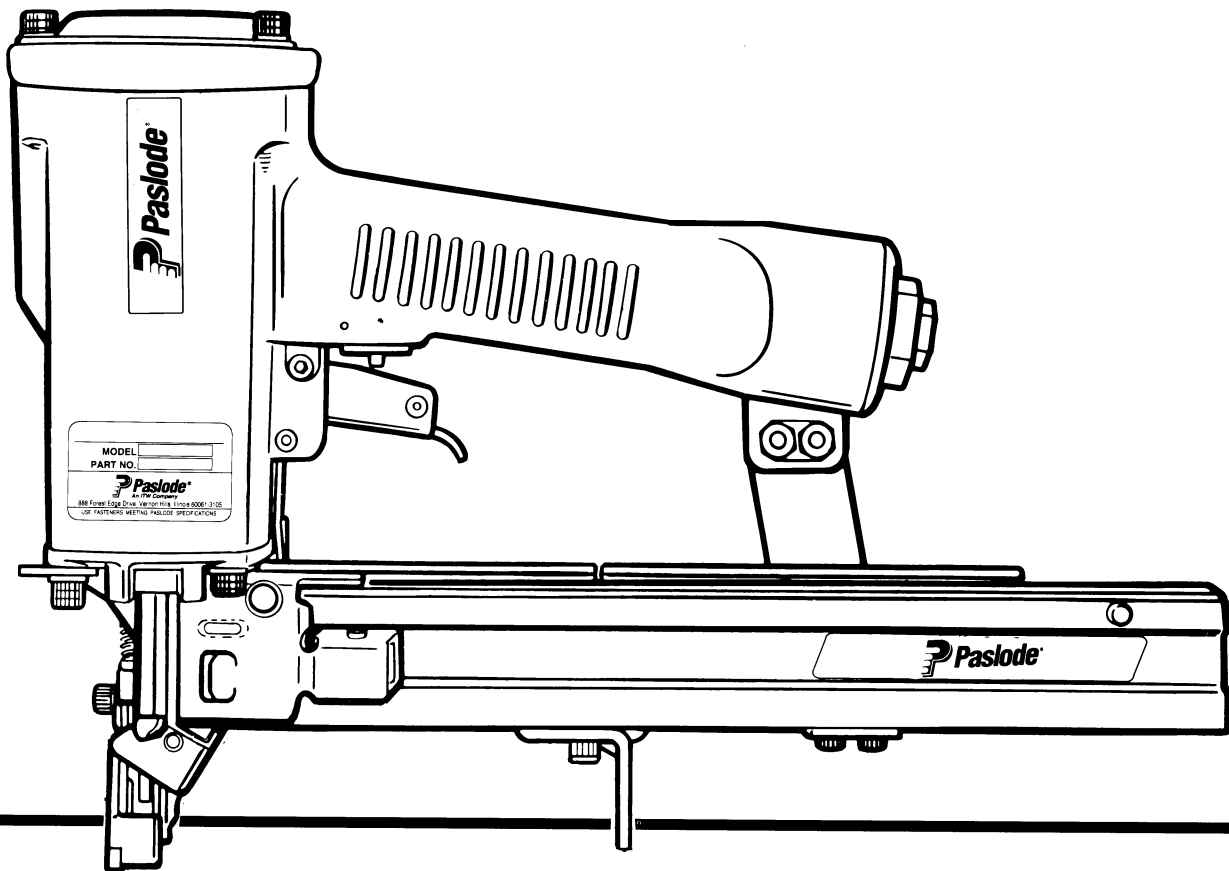




MODEL 3150/38-W16DL SERIES STAPLER
MODEL 3200/50-W16DL SERIES STAPLER



TOOL SCHEMATIC AND PARTS

IMPORTANT! **DO NOT DESTROY**

Always refer to safety and maintenance manual #403606 for detailed information on this tool. It is the customer's responsibility to have all operators and service personnel read and understand this information.

PARTS LEGEND

3150/38-W16DL, 403329
3200/50-W16DL, 403460

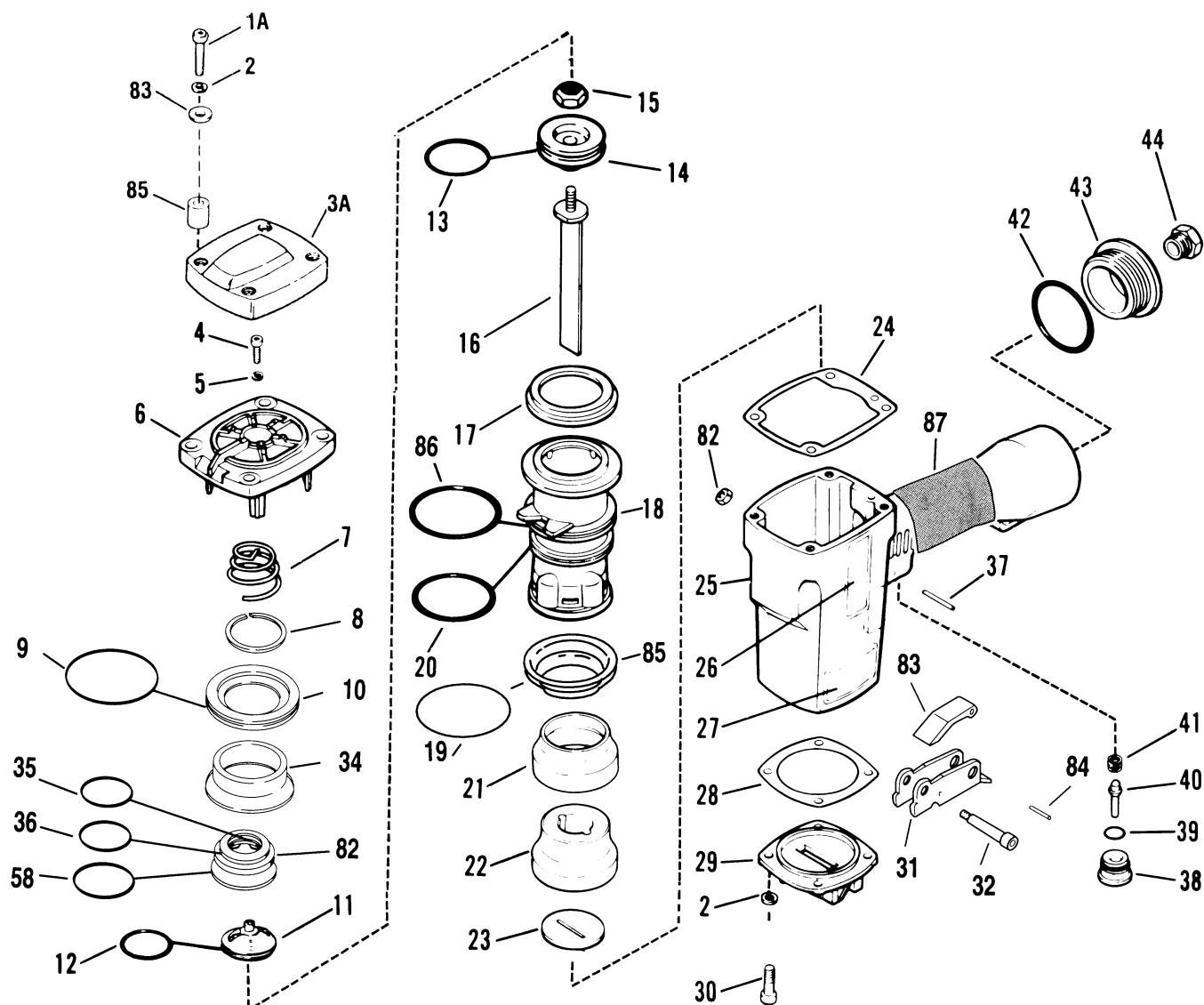
1	091362	4	Socket Head Capscrew, 1/4-20 x 1-1/2"
2	002187	8	Lock Washer, 1/4"
3	404242	1	Air Diffuser
4	006310	1	Socket Head Capscrew, #6-32 x 1/2"
5	070545	2	Lock Washer, #6
→	6	402704	1 Cap
7	402717	1	Conical Spring
8	404230	1	Retaining Ring
*9	091537	1	"O" Ring, Main Valve Assembly
10	404122	1	Upper Valve Piston
11	404055	1	Post Main Valve
*12	404256	1	"O" Ring, Main Valve Post
*13	402723	1	"O" Ring, Piston
14	403563	1	Piston
15	403582	1	Jam Nut
*16	404182	1	Driver Blade
17	402725	1	Seal, Sleeve
→	18	405245	1 Sleeve
*19	402728	1	"O" Ring, Sleeve
*20	402729	1	"O" Ring, Sleeve
21	403854	1	Retainer, Bumper
*22	403855	1	Bumper
23	402754	1	Seal, Driver Blade
*24	402707	1	Gasket, Cap
25	402701	1	Housing
26	404939	2	Logo, Housing
27	096893	1	Nameplate
28	402708	1	Gasket, Flange
29	402706	1	Flange
30	091545	4	Socket Head Capscrew, 1/4-20 x 7/8"
→	31	405 144	1 Trigger
32	402079	1	Pin, Trigger
33	402668	1	Retaining Washer
34	404054	1	Seal Main Valve
*35	090927	1	"O" Ring
*36	092775	1	"O" Ring
37	026133	2	Roll Pin, 1/8" Dia. x 1" Lg.
38	401958	1	Valve Body
*39	092174	1	"O" Ring, Valve Body
40	097746	1	Valve Pin
41	097748	1	Spring, Valve Pin
42	091591	1	"O" Ring, End Plug
▲	43	401940	1 End Plug
44	091622	1	Reducing Pipe Bushing
45	004502	4	Socket Head Capscrew, #10-32 x 5/8"
46	092037	6	Flexloc Nut, #10-32
47	402741	1	Rail Bracket (3150/38)
	402781	1	Rail Bracket (3200/50)
▲	48	004224	6 Socket Head Capscrew, #10 - 32 x 3/8"
49	004238	2	Lock Washer, #10
50	402629	2	Hardened Washer
51	402994	1	Reinforced Intermediate W.C.E.
*52	402738	1	Spring
53	402736	1	Flat Washer, #10
54	402997	1	Footed Lower W.C.E.
55	402763	1	Upper Work Contacting Element
*56	402734	1	Spring
57	402756	1	Front Guide (3150/38)
	402773	1	Front Guide (3200/50)
58	092773	1	"O" Ring
59	404698	2	Roll Pin Assembly
60	404843	1	Back Plate (3150/38)
	404845	1	Back Plate (3200/50)
61	402730	1	Pivot Pin, Front Guide
62	402762	1	Roll Pin, 5/32" Dia. x 1-3/4" Lg.
63	405078	1	Spring, Front Guide Latch (3150/38)
	405079	1	Spring, Front Guide Latch (3200/50)
64	402761	1	Latch, Front Guide (3150/38)
	402776	1	Latch, Front Guide (3200/50)
65	402486	1	Retaining Washer
**66	500459	1	Warning Sign
67	402748	1	Pivoting Rail Cover Assembly (3150/38)
	402780	1	Pivoting Rail Cover Assembly (3200/50)
68	404853	1	Rail and Rail Cover Assembly (3150/38)
	404852	1	Rail and Rail Cover Assembly (3200/50)
69	402731	1	Logo, Rail
70	400007	1	Clip
71	402758	1	Latch, Follower
72	402759	1	Spring, Follower Latch
▲	73	091568	1 Pan Head Screw, #6-32 x 1/4"
*74	090449	1	Negator, Double Length
75	403744	1	Drum, Negator
76	402743	1	Pin, Negator Drum
77	402760	1	Follower
78	403326	1	Rail Cover Spring Stop
79	404325	1	Stop Nut, #8 - 32
80	091447	4	Flat Washer
81	404243	4	Spacer, Diffuser
82	404056	1	Lower Valve, Piston
→	83	405147	1 Lever, Trigger
→	84	005849	1 Roll Pin, 3/32" Dia. x 5/8" Lg.
→	85	405243	1 Flange, Sleeve
→	86	091966	1 O-Ring
→	87	500488	1 Grip, Handle

* Denotes normal wear items.

** Make sure warning label (500459) is properly affixed.
 Replace if necessary. Label available at no charge through
 the Service Dept.

▲ Apply Loctite 242 (Blue) Part No. 093500

→ Denotes new change.

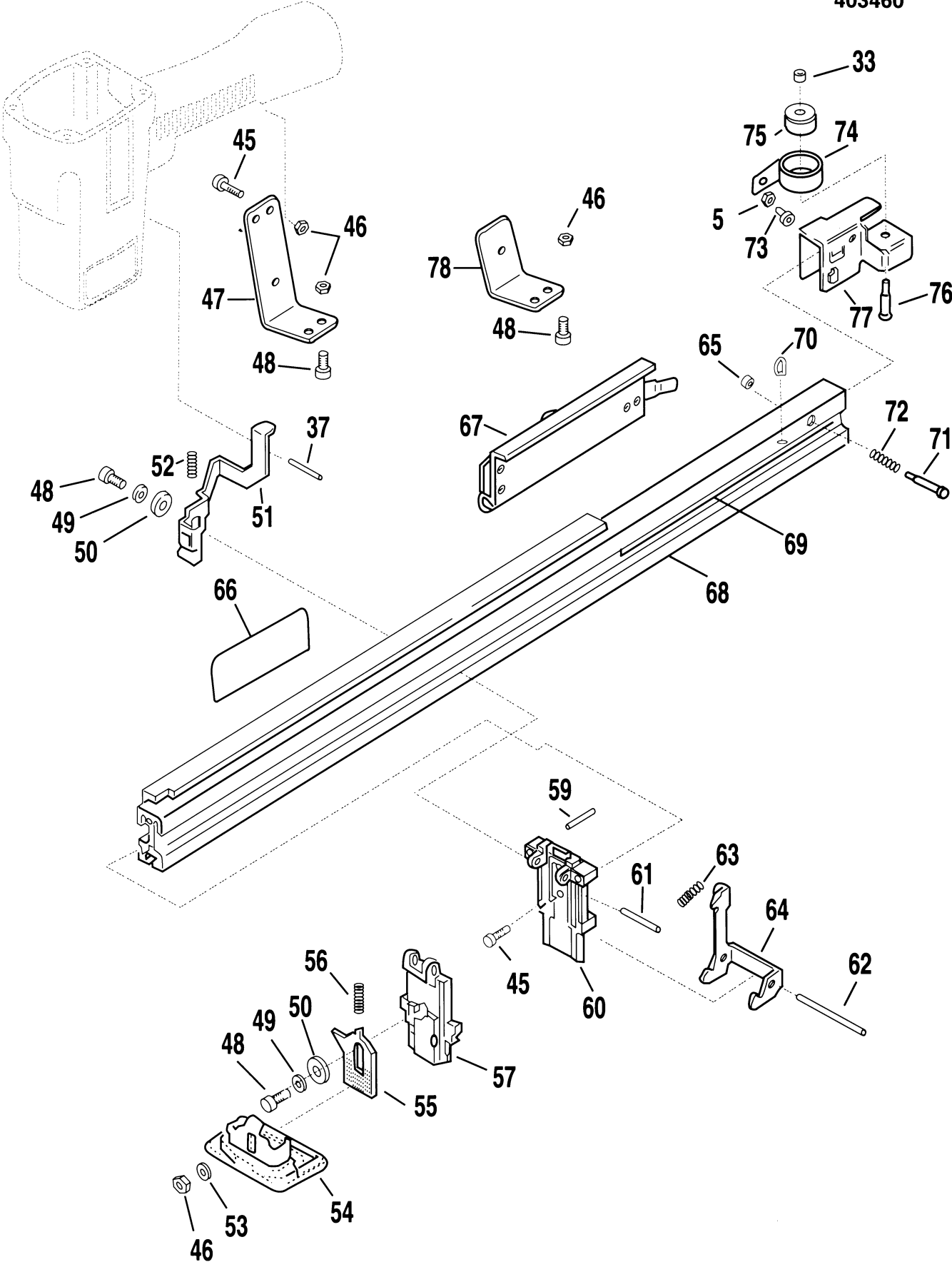


WARNING

All parts must be periodically inspected and replaced if worn or broken. Failure to do this can affect the tool's operation and present a safety hazard.

3150/38/W16DL
403329

3200/50-W16DL
403460



PARTS OFFERED AS ASSEMBLIES

404345 Piston Assembly

Includes

13	402723	1	"O" Ring, Piston
14	403563	1	Piston
15	403582	1	Jam Nut
16	404182	1	Driver Blade

→ 402408 Trigger Assembly

Includes

31	405144	1	Trigger
83	405147	1	Lever, Trigger
84	005849	1	Roll Pin, 3/32" Dia. x 5/8" Lg.

404188 Main Valve Assembly

Includes

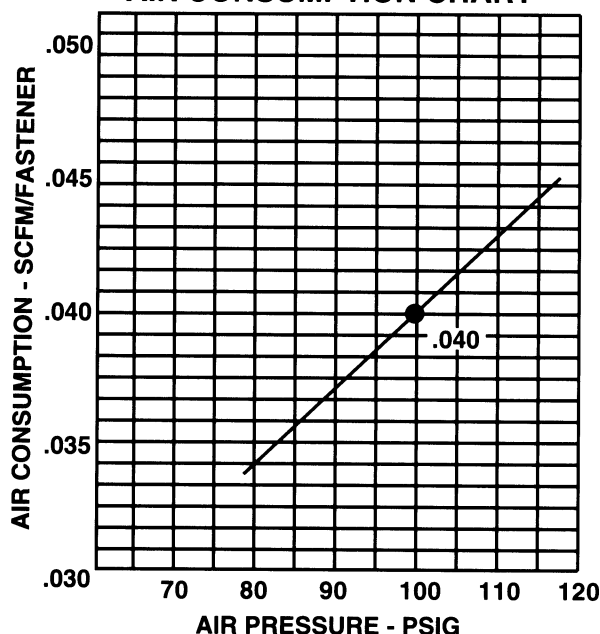
8	404230	1	Retaining Ring
*9	091537	1	"O" Ring, Main Valve Assembly
10	404122	1	Upper Valve Piston
34	404054	1	Seal, Main Valve
*35	090927	1	"O" Ring, Main Valve Assembly
*36	092775	1	"O" Ring, Main Valve Assembly
*58	092773	1	"O" Ring, Main Valve Assembly
82	404056	1	Lower Valve Piston

402709 Cap Assembly

Includes

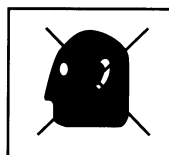
4	006310	1	Socket Head Capscrew, #6-32 x 1/2"
5	070545	2	Lock Washer, #6
6	402704	1	Cap
7	402717	1	Conical Spring
11	404055	1	Post, Main Valve
12	404256	1	"O" Ring, Main Valve Post
	404188	1	Main Valve Assembly

AIR CONSUMPTION CHART



SAFETY INSTRUCTIONS

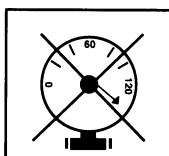
WEAR EYE AND HEARING PROTECTION



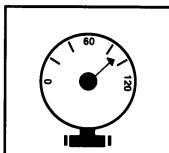
Always wear hearing protection and eye protection devices, including side shields when operating or working in the vicinity of a tool.



DO NOT EXCEED MAXIMUM RECOMMENDED AIR PRESSURE



Operate the tool using only the recommended air pressure. Do not exceed the maximum air pressure marked on the tool. Be sure the air pressure gauge is operating properly and check it at least twice a day.

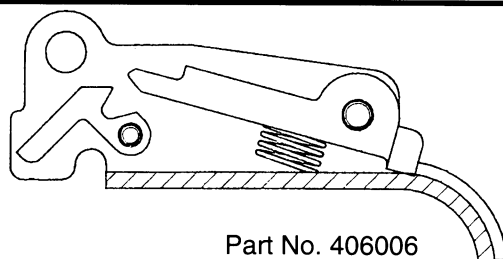


Never use any bottled air or gases such as oxygen to operate the tool since they could cause the tool to explode.

ACCESSORIES

Sequential Operating Kit

This special attachment is designed for sequential operation (stops "contact-firing"). The operator must depress and hold the work contacting element against the work surface before pulling the trigger. This sequence must be repeated each time the tool drives a fastener.

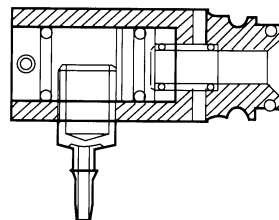


Part No. 406006

ACCESSORIES *Continued*

Remote Fire Valve

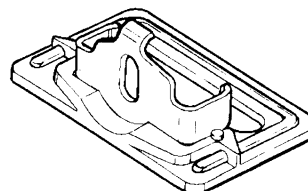
This valve via a positive air signal allows a machine mounted tool to be operated from an automatic air valve or foot pedal system.



Part No. 1X0713

Adjustable Foam Contacting Element

This is a wide-foot, cast and brazed assembly that replaces the standard 3000-W16 series work contacting element. This assembly is intended for foam sheathing applications and on machine-mounted tools.

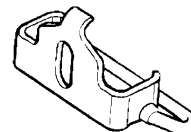


Note: Must be used in combination with #402763 - upper WCE.

Part No. 402997

Rear Activating Foam Contacting Element

This is a rear-activating, welded-wire work contacting element. It replaces the standard 3000-W16 series work contacting element where rear activation is needed.



Part No. 1X1026

Lubricants and Loctite

Loctite 242 (Blue) 102

Lubricating Oil 8 oz.

Lubricating Oil with Antifreeze

Chemplex 710 Lubricant 1 lb.

Chemplex 710 Lubricant 5 gram tube

Part No. 093500

Part No. 219026

Part No. 219090

Part No. 403734

Part No. 219188

Degreaser Cleaner

Ideal Cleaner for all Paslode tools

Part No. 219086

Belt Hook

Attaches to cap of tool enabling you to carry tool on belt holder.

Part No. 219017

Belt Hook Holder

Attaches to work belt and carries tool using the above belt hook.

Part No. 219028

Tool Case

Part No. 219033

Safety Glasses

Clear

Tinted

Part No. 402510

Part No. 402512



An Illinois Tool Works Company
888 Forest Edge Drive
Vernon Hills, IL 60061