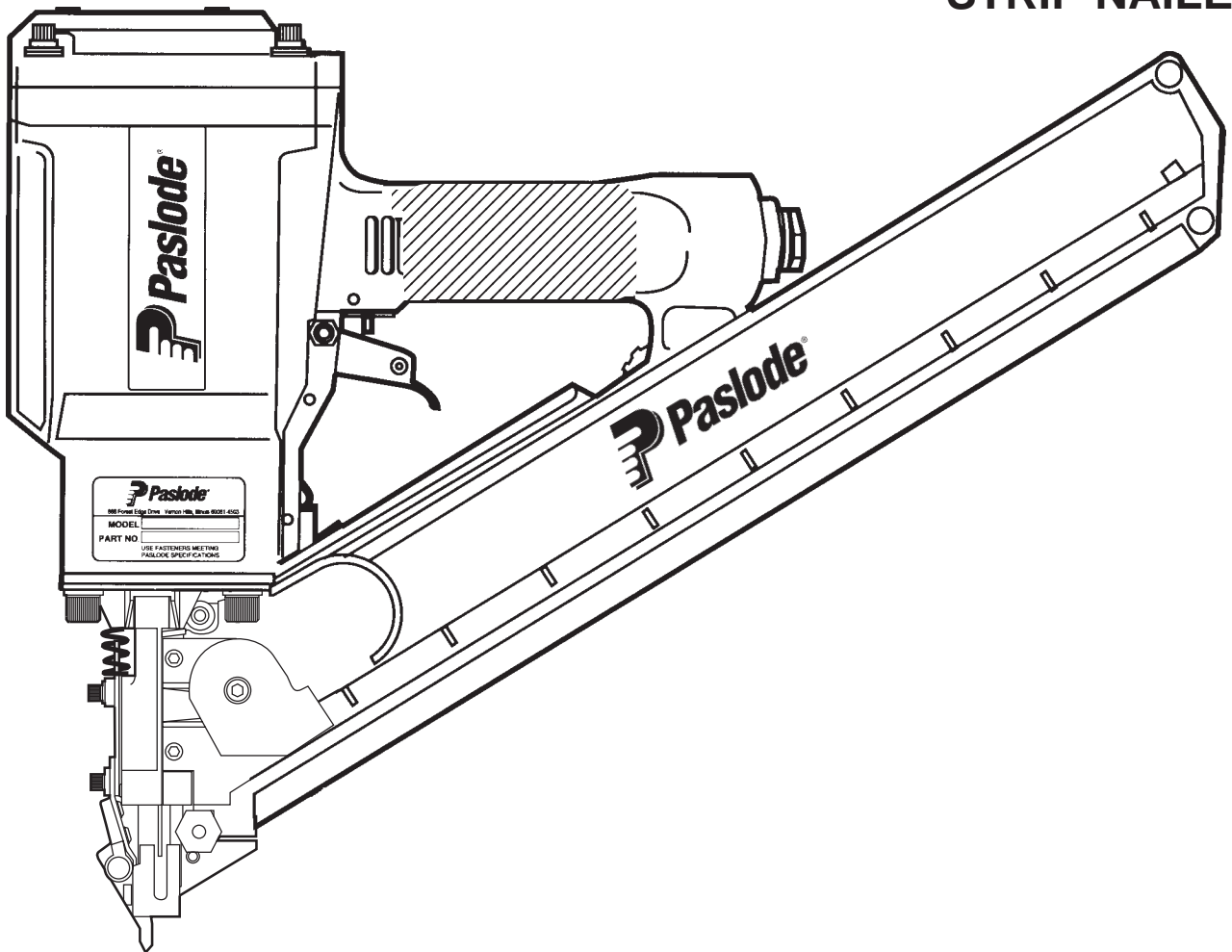




**MODEL 5250/65S-PP
POSITIVE PLACEMENT
STRIP NAILER**



**IMPORTANT!
DO NOT DESTROY**

Always refer to safety and maintenance manual #403606 for detailed information on this tool. It is the customer's responsibility to have all operators and service personnel read and understand this information.

TOOL SCHEMATIC AND PARTS

PARTS LEGEND

5250/65S-PP, 500570

▲ 1	013625	7	Socket Head Capscrew, #8-32 x 1/2"	*60	402008	1	Gasket, Nose Flange
2	401955	6	Flat Washer, #8	61	402005	1	Flange, Nose
**3	402057	1	Air Deflector	62	006787	2	Roll Pin, 3/16" Dia. x 1" Lg.
4	500453	1	Bumper, Post	62A	401697	2	Roll Pin
7	092735	4	Socket Head Capscrew, 1/4-20 x 1-1/4"	63	401988	1	Spring, Work Contacting Element
8	002187	4	Lock Washer, 1/4"	64	500585	1	Lower W.CE. Bracket
9	092757	4	Flat Washer	65	402094	2	Flat Washer, #10
10	500452	1	Cap	66	004238	1	Lock Washer, #10
*11	401983	1	Gasket	▲ 67	009037	2	Socket Head Capscrew, 10/32 x 1/2"
12	500407	1	Spring	68	500577	1	Work Contacting Element
13	406041	1	Retaining Ring	69	402095	1	Nut Bar
*14	500461	1	"O" Ring, Upper Valve Piston	70	500575	1	Nose
15	500455	1	Upper Valve Piston	71	009016	4	Socket Head Capscrew, 5/16-18 x 1"
16	401946	1	Seal, Main Valve	72	095417	4	Lock Washer, 5/16"
*17	092042	1	"O" Ring, Lower Valve Piston	73	002442	4	Lock Washer, #8
*18	091208	1	"O" Ring, Lower Valve Piston	74	401979	1	Cover, Magazine
*19	401950	1	"O" Ring, Lower Valve Piston	75	401978	1	Spring, Upper Work Contacting Element
20	500456	1	Lower Valve Piston	76	401977	1	Upper Work Contacting Element
21	500454	1	Post	77	402010	2	Bushing
22	095432	1	"O" Ring, Post	78	500627	4	Socket Head Capscrew 8-32 x 1/2"
▲ 23	402906	1	Button Head Capscrew, #10-32 x 5/8"	79	500580	1	Magazine, Right and Left(Includes Part# 401980)
25	091861	1	Nut	80	900220	1	Bracket, Probe
26	092116	1	Washer	81	500584	1	Shear Block (Including Pin)
*27	092971	1	"O" Ring, Piston	82	401975	2	Pin, Shear Block
28	401956	1	Piston	→ 83	500862	1	Follower Assembly
*29	401904	1	Driver Blade	84	900222	1	Pin, Probe
30	402011	1	Seal, Sleeve	85	900221	1	Probe
→ 31	500860	1	Sleeve	86	401965	1	Drum, Negator
*32	092762	1	"O" Ring Upper, Sleeve	*87	401964	1	Spring, Negator
*33	091024	1	"O" Ring Lower, Sleeve	88	403042	1	Cover, Spring
34	401984	1	Flange	89	008731	1	Socket Head Capscrew, #10-24 x 3/4"
34A	402993	1	Shim	→ 90	016343	2	Socket Head Capscrew, #8-32 x 1-1/4"
*35	401985	1	"O" Ring, Flange	91	403738	1	Pin, Magazine
*36	404768	1	Bumper	92	403739	1	Spring, Magazine Pin
37	401936	1	Housing	93	023766	1	Retainer Ring
38	404937	2	Logo, Housing	94	500630	1	Socket Head Capscrew, #8-32 x 1"
39	097748	1	Spring, Valve Pin	95	500576	1	Channel
40	097746	1	Valve Pin	97	500581	1	Spacer, Magazine
*41	092174	1	"O" Ring, Valve Body	98	091591	1	"O" Ring, End Plug
42	401958	1	Valve Body	99	401974	4	Screw, Wear Plate
43	026133	3	Roll Pin, 1/8" Dia. x 1" Lg.	100	404046	1	Wear Plate Kit
44	401992	1	Spring, Interm. Work Contacting Element	101	900196	1	Retaining Ring, Probe Pin
45	401991	1	Intermediate Work Contacting Element	**102	500458	1	Warning Label
46	096893	1	Name Plate	103	401980	1	Bolt Knob
47	402079	1	Trigger Pin	104	500488	1	Grip Handle
48	404325	4	Stop Nut	105	900223	1	Knob
50	406006	1	Sequential Trigger Assembly	106	900224	1	Label
→ 51	500856	2	Socket Head Capscrew #8-32 x 3/8"	107	500588	1	Label, Long/Short
53	406026	4	Cup Washer, Diffuser	108	900130	1	Handle
▲ 54	401940	1	End Plug	109	900117	1	Lever
55	091622	1	Reducing Pipe Bushing	110	900131	1	Retaining Ring
56	401997	1	Cup, Knob	111	900124	1	Plunger
57	401996	1	Spring, Knob	112	900126	1	Spring
58	401993	1	Knob	113	091880	1	Roll Pin, Knob
59	401998	1	Mounting Insert	114	402655	1	Logo, Magazine

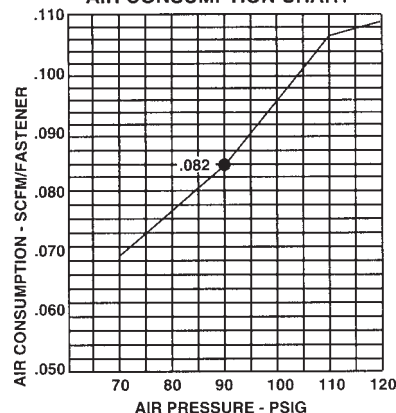
* Denotes normal wear items

**NOTE: Make sure warning label (500458) is properly affixed.
Replace if necessary. Label available at no charge through
the Service Dept.

▲ Apply loctite 242 (Blue) Part No. 093500

→ Denotes new change

AIR CONSUMPTION CHART



SPECIAL OPERATING INSTRUCTIONS

POSITIVE PLACEMENT OPERATION

This tool is equipped with a special probe dedicated solely for the use of locating the holes in metal hardware (such as straps, joist hangers, clips/framing anchors, etc.) Insert the probe into the hole. Firmly hold the tool and press the work contacting element against the work surface (metal hardware) until it is completely depressed. Squeeze trigger to drive the fastener. Lift the tool from the workpiece and repeat procedure for next fastener.

The tool is equipped with a specialized magazine, dedicated to driving four nail sizes:

- 1) 1-1/2" x .131
- 2) 1-1/2" x .148
- 3) 2-1/2" x .148
- 4) 2-1/2" x .162

The magazine has an adjustable mechanism which allows the operator to drive two different lengths of nails: long (2-1/2") and short (1-1/2").

To switch from one position to the other, pull out the "button" which unlocks the lever. Using the handle, rotate the lever to the other position and release the button. It will now be locked into the new position.

To drive 1-1/2" nails, place the lever in the upward "SHORT NAIL" position. To drive 2-1/2" nails, place the lever in the downward "LONG NAIL" position.

Should the lever not lock into place properly, remove the magazine assembly and clean out the lever area. Or, if necessary, remove the nose plate and lever mechanism by taking out the four socket head cap screws. Then, clean all dirt and debris and reassemble. (Refer to Tool Schematic.)

COLOCACION PRECISA

Esta herramienta está equipada con un probador especial exclusivo para localizar orificios en piezas de metal (como perfiles laminados, cintas metálicas, anclajes de estructuras, sujetadores metálicos, etc.) Introduzca el probador en el orificio. Sostenga firmemente la herramienta y oprima el elemento de contacto contra la superficie de trabajo (pieza de metal) hasta que quede completamente oprimido. Oprime el gatillo para impulsar el sujetador. Separe la herramienta de la pieza de trabajo y repita el procedimiento para impulsar el siguiente sujetador. Esta herramienta está equipada con un cargador universal, capaz de clavar clavos de cuatro distintas longitudes:

- 1) 1-1/2" x .131
- 2) 1-1/2" x .148
- 3) 2-1/2" x .148
- 4) 2-1/2" x .162

El cargador tiene un mecanismo especial que permite clavar clavos de dos distintas longitudes largos (2-1/2 plg.) y cortos (1-1/2 plg.).

Para cambiar de una posición a la otra, tire hacia fuera del 'botón' que sujeta la palanca en posición. Con el mango, gire la palanca a la otra posición y suelte el botón. Así queda fija la palanca en la nueva posición.

Para impulsar clavos de 1 - 1/2 pulgadas coloque la palanca en la posición superior "SHORT NAIL". Para impulsar clavos de 2- 1/2 pulgadas coloque la palanca en la posición inferior "LONG NAIL".

Si la palanca no queda fija en su lugar, retire el conjunto del cargador y limpie el área de la palanca. Si es necesario puede desmontar la placa de la punta y el mecanismo de la palanca sacando los cuatro tornillos de cabeza hexagonal. Así puede limpiar el polvo y la suciedad de la palanca, y vuelva a armar. (Consulte el esquema de la herramienta.)



WARNING

Before switching positions, check the magazine to make sure it is free of all nails. Failure to do so can result in tool damage.



ADVERTENCIA

Antes de cambiar posiciones, revise que no haya clavos dentro del cargador. Si no lo hace, su herramienta se puede dañar.



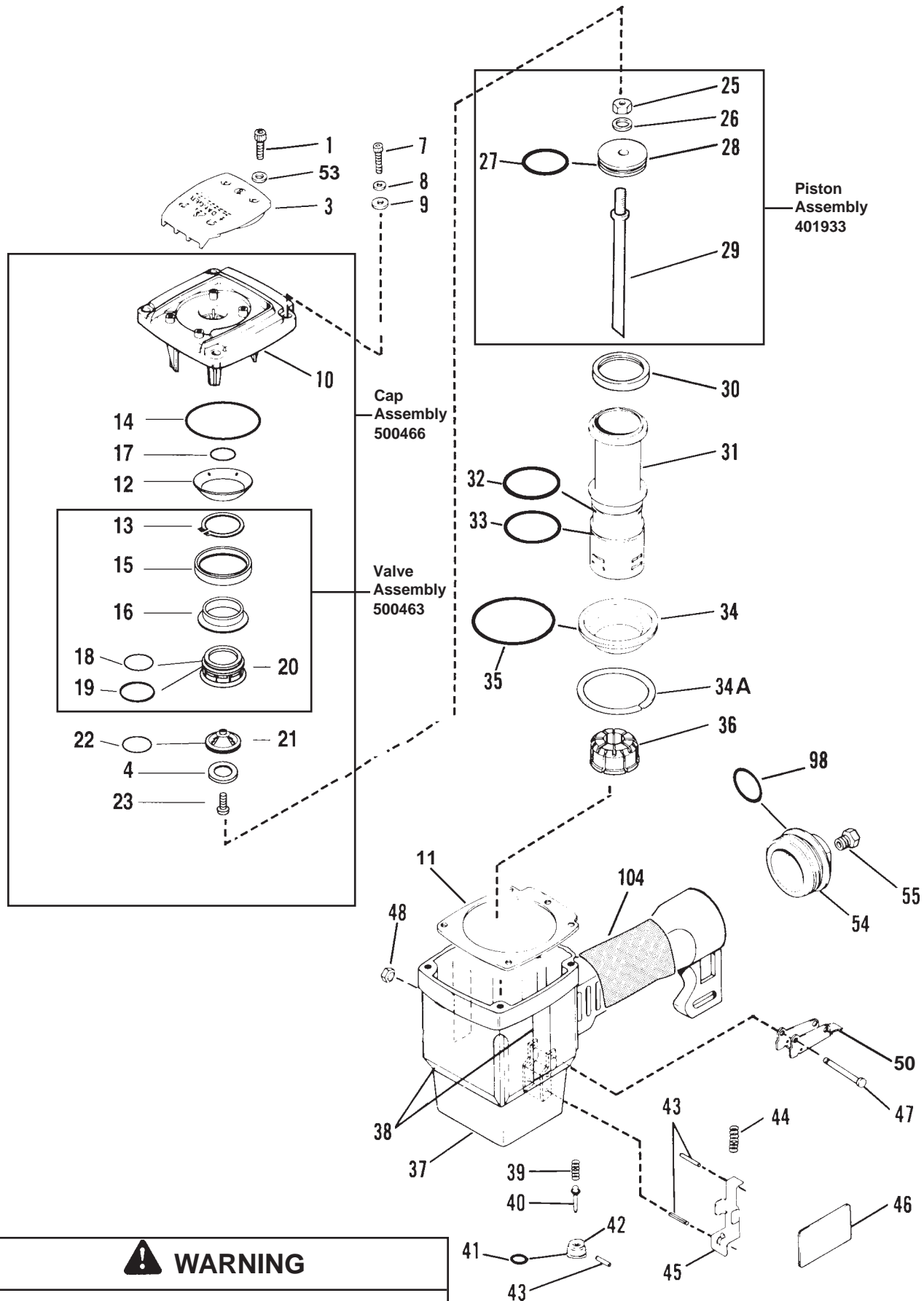
DANGER

USE ONLY GENUINE PASLODE HEAT TREATED NAILS TO AVOID SERIOUS INJURY FROM RICOCHETING FASTENERS.



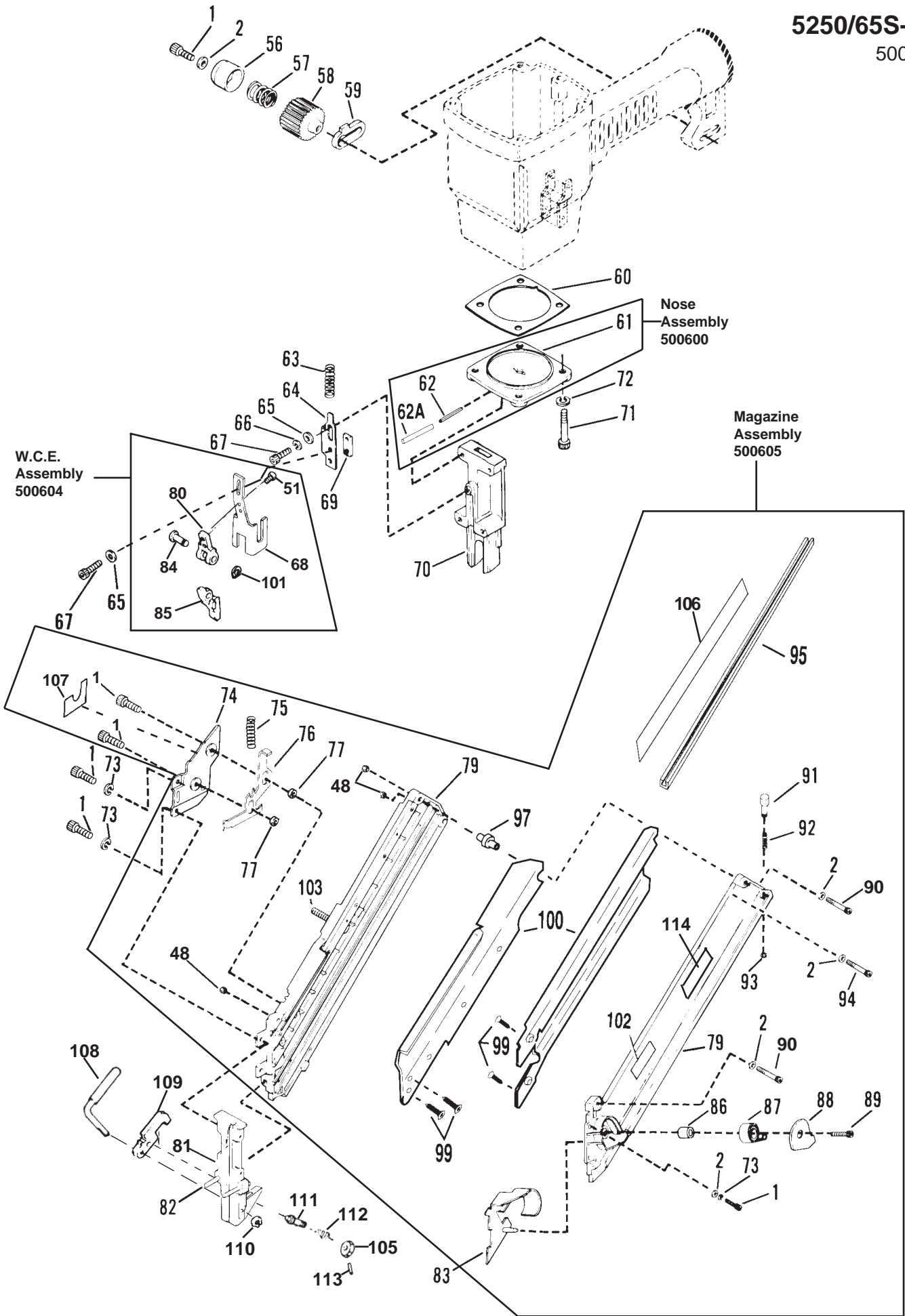
PELIGRO

USE SOLAMENTE CLAVOS TERMOTRATADOS ORIGINALES DE PASLODE PARA EVITAR HERIDAS SERIAS DE SUJETADORES QUE REBOTEN.



⚠ WARNING

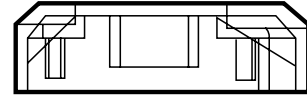
All parts must be periodically inspected and replaced if worn or broken. Failure to do this can affect the tool's operation and present a safety hazard.



ACCESSORIES

Silencer Kit

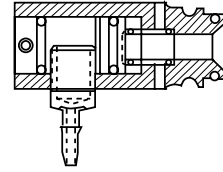
This kit is used to minimize the sound of the air rushing out of the air deflector during tool operation.



Part No. 402451

Remote Fire Valve

This valve via a positive air signal allows the machine mounted tool to be operated from an automatic air valve or foot pedal system.



Part No. 1X0713

Rafter Hanger Bracket

Allows tool to be hung over rafter during framing construction.

Part No. 219176

Hanger Bracket

Attaches to top of tool for storage or counter-balancing.

Part No. 1X0856

Lubricants

- Lubricating Oil 16 oz. Part No. 403720
- Lubricating Oil with Antifreeze Part No. 219090
- Chemplex 710 Lubricant 1 lb. Part No. 403734
- Chemplex 710 Lubricant 5 gram tube Part No. 219188

Degreaser Cleaner

Ideal Cleaner for all Paslode Tools

Part No. 219086

Safety Glasses

- Clear Part No. 402510
- Tinted Part No. 402512

Framing Conversion Kit

This kit allows you to convert a 5250PP into a standard 5325 strip nailer. Part No. 500601

Universal Belt Hook Kit

Attaches to cap enabling operator to carry tool on a belt holder (#219028). Part No. 219017

Late Model 5000 Repair Kit

This kit repairs all leaks except for the trigger valve. Part No. 219219

Trigger Valve Repair Kit

This kit repairs trigger valve air leaks. Part No. 219224

SAFETY INSTRUCTIONS

WEAR EYE AND HEARING PROTECTION

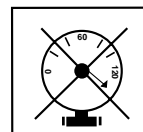


Always wear hearing protection and eye protection devices, including side shields when operating or working in the vicinity of a tool.



Never use any bottled air or gases such as oxygen to operate the tool since they could cause the tool to explode.

DO NOT EXCEED MAXIMUM RECOMMENDED AIR PRESSURE



Operate the tool using only the recommended air pressure. Do not exceed the maximum air pressure marked on the tool. Be sure the air pressure gauge is operating properly and check it at least twice a day.

